

39th TRADITIONAL CONFERENCE OF THE PUBLIC AGRICULTURAL ADVISORY SERVICE (PAAS)

2nd Day: The European Innovation Partnership (EIP) event

KUHproKLIMA (= „Cow for Climate“)

"Innovative strategies for resource-saving and resilient grassland management"

Lecturer Bajohr, Christine



REPUBLIC OF SLOVENIA
MINISTRY OF AGRICULTURE,
FORESTRY AND FOOD



RURAL
DEVELOPMENT
PROGRAMME

The European Agricultural Fund for Rural Development: Europe investing in rural areas

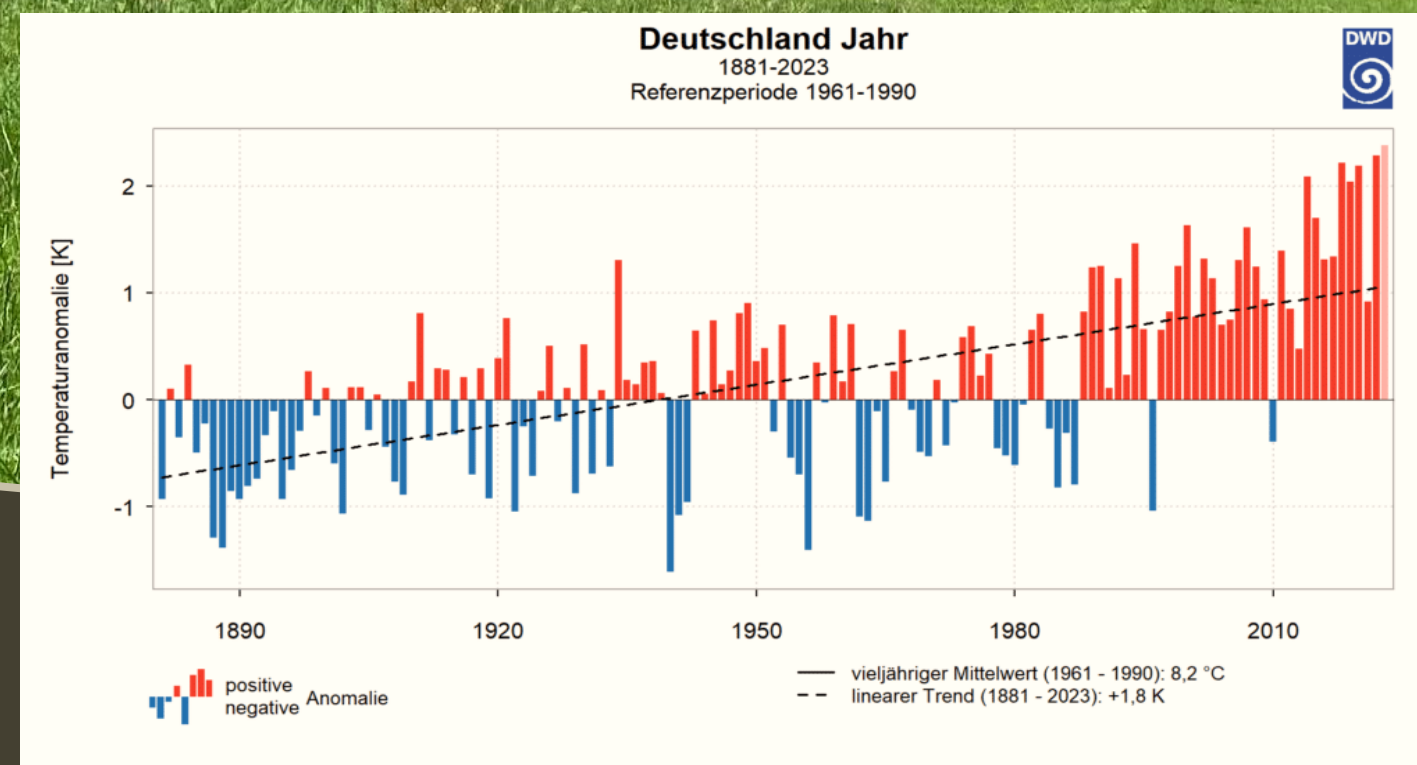
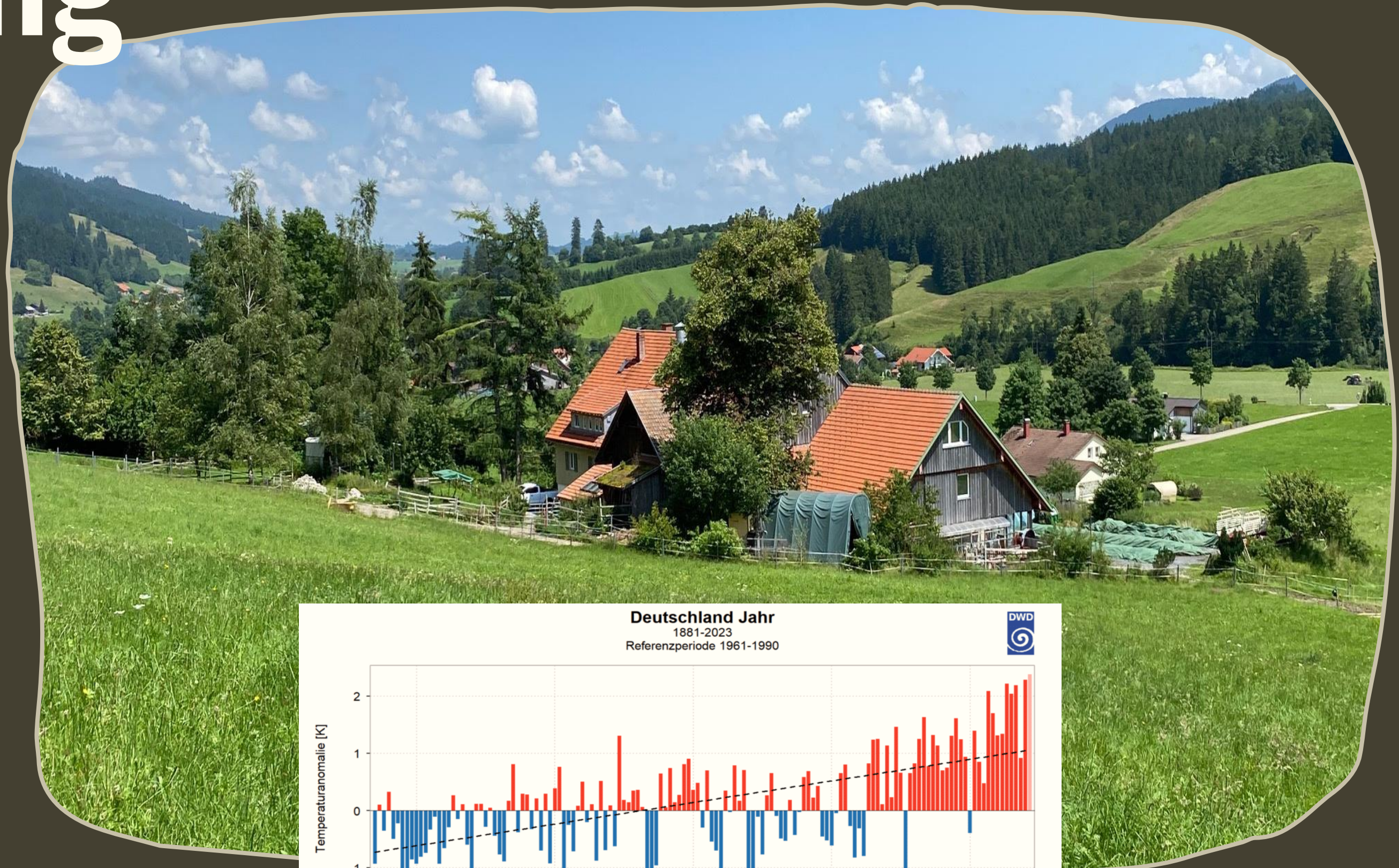


AKIS
SLOVENIA

Knowledge and innovation for agriculture

Bled,
19th
November
2024

Starting Point



Our journey



2019

Concept



KUHproKLIMA

On-farm research project
for nature-based solutions



KUH

Pro

KLIMA

2020 - 2023



Innovative Strategies
for a
Resource-saving
and
Resilient
Grassland Management

Measures

Locally adapted
combination of
different
practices

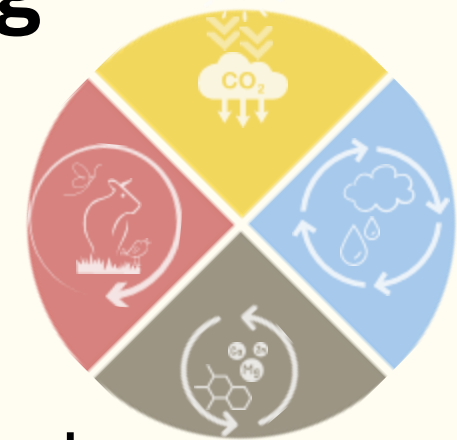
1) Ecosystem-Grassland-Farm-Mindset

Context work, knowledge input and resource management, **Holistic Planned Grazing**

2) Land planning

Grazing habitat for cow herds and to promote biodiversity and the water cycle

3) Soil biology management to promote natural nutrient cycles (experiments/product development)



Strategy

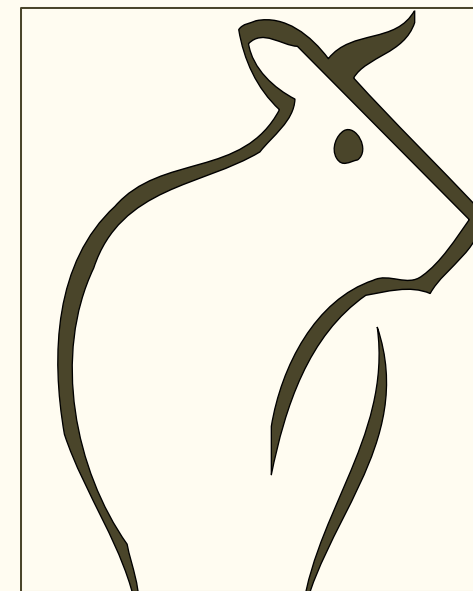
Address
ecosystem
processes



Improve
functions and
natural
resources



Resilience,
healthy farm
system



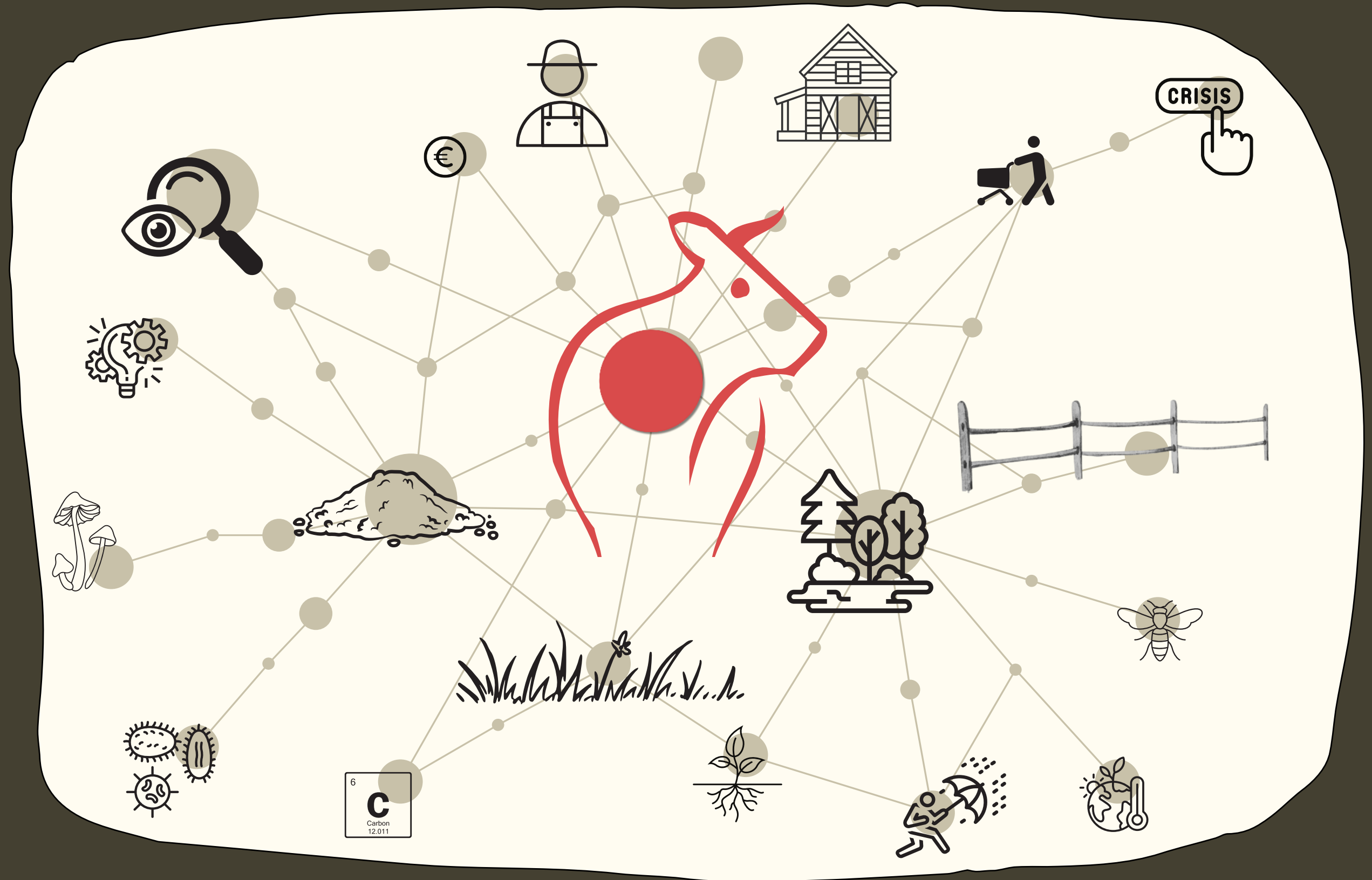


Eco- sys- tem

Grassland Farm



The Whole



Mana- gement

Ecosystem
grassland farm



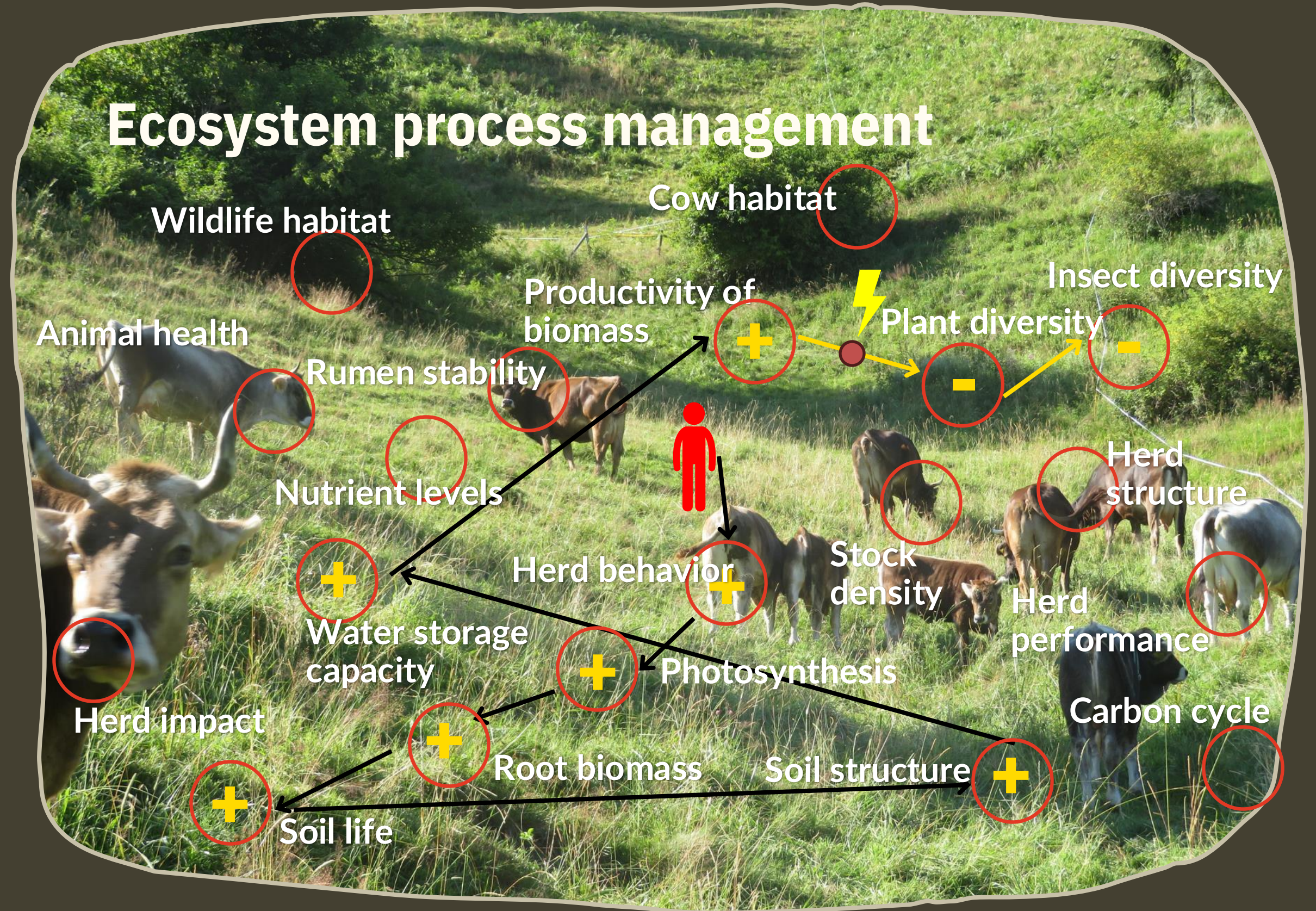
Management

Ecosystem
grassland farm



A vertical collage of five images showing the stages of plant growth. The top image shows several small green seedlings with two leaves each, growing out of dark brown soil. The second image shows a close-up of dark, moist soil being turned over by a metal trowel. The third image shows a person's hand holding a large amount of dark, rich soil. The fourth image shows a close-up of dry, cracked, and clumpy brown soil with small green plants starting to grow. The bottom image shows a hand holding a single stalk of wheat, with green leaves and a golden-brown head.

+/-





Management

Important
key
learnings

- 1) Influence on partial processes **+/-**
 - New formation or growth
 - Decomposition or digestion
 - Storage and release
- 2) **Better management of disruptions**
It must be adapted to the site factors (SF)
(SF determine the pattern, pace and possibilities of the recovery process)
- 3) Focus on **Functions and Feedbacks** (+thresholds)
Context assessment = understand the whole

Resi- lience



Buffer

+/-

1) Resilience = ability

>>> different levels (simultaneously)

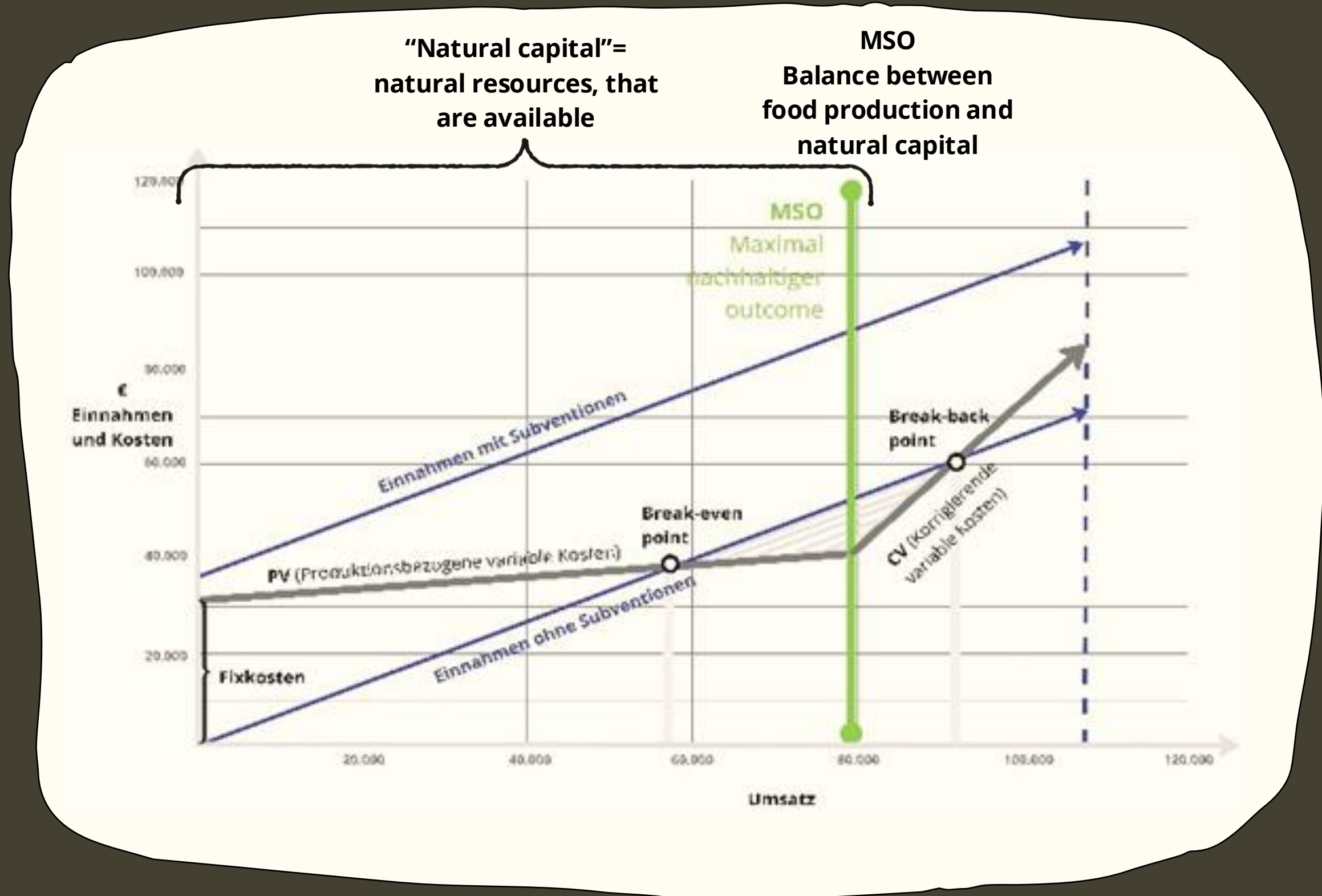
- Resist
- Adapt
- Transform

2) Tipping points can be influenced

- Influencing feedbacks
- Inserting buffers

Re-sources

- 1) An increase in production does not automatically lead to higher profitability.
- 2) If the “natural capital” is not managed sustainably, the productivity of the farm decreases.



“Less is More” - Studie

Der Nethergill-Ansatz nach Christ Clark und Brian Scanlon, NffN. Veränderte Darstellung: C. Bajohr

CLARK, Chris, Less is more: Improving profitability and the natural environment in hill and other marginal farming systems Nov. 2019



Re- sour- ces

Farm management
= Resource
management

Case
“Tobi’s
farm”

Focus shift from “production increase” to
“profit margin” through:

1. Promotion of natural resources
2. Better use of existing resources
3. Reduction of fixed costs
4. Reduction of variable costs
5. Improvement in herd management
6. Increasing diversification
7. Improvement in added value

Buffer

KUH pro KLIMA

Guide

1. Topic Resilience
2. Human-cow-plant-soil life interaction
3. **Ecosystem process management**
4. Biodiversity in grassland
5. Implementation of pasture management
6. Soil biology management
7. Land planning concepts
8. Resource management
9. Climate” context (carbon, life cycle assessment)
10. Practical production and application of
compost/compost extracts
11. Testing of tools

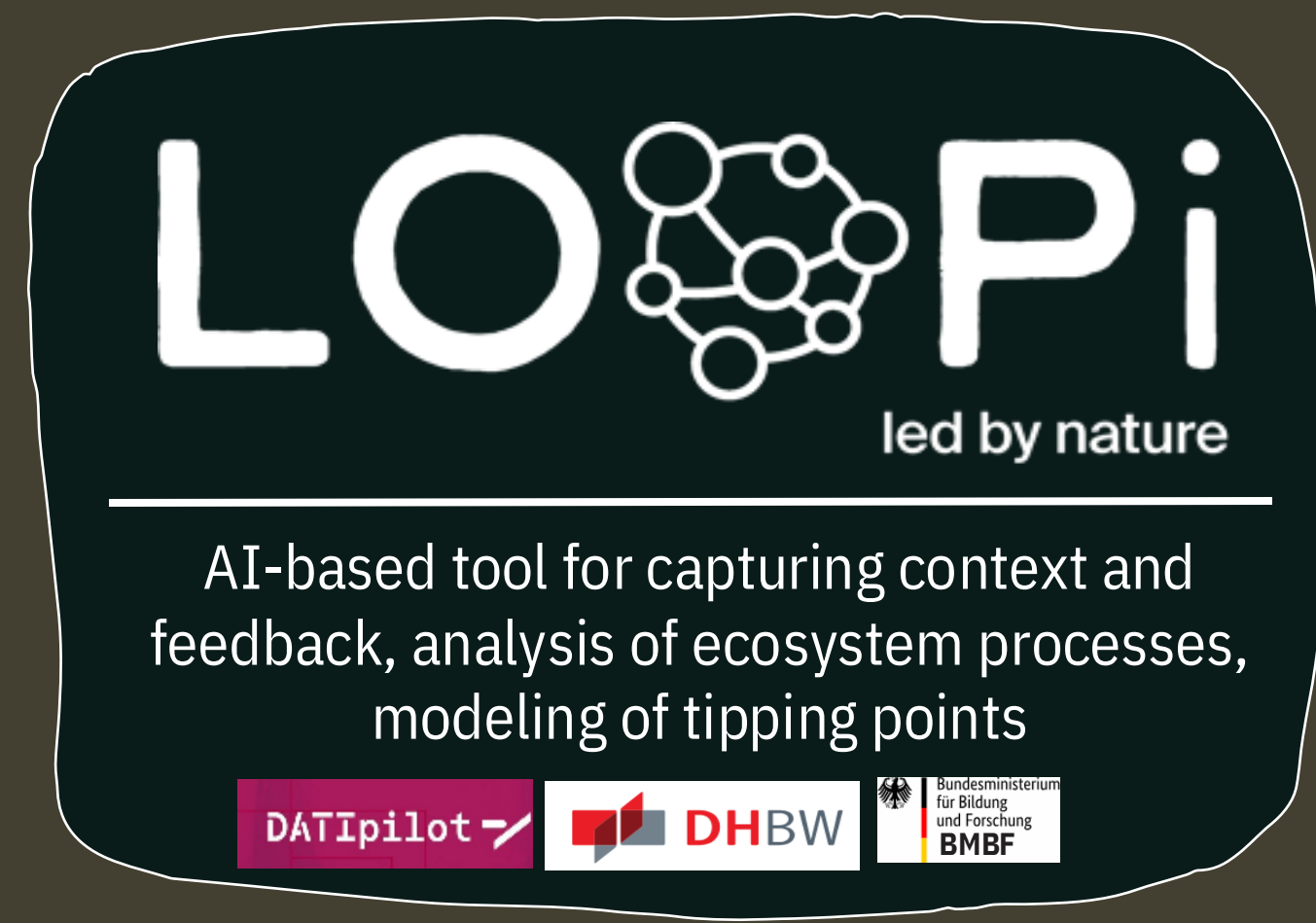




AERA
Land
gGmbH
www.aera.land



Pro- jects



...not the end

